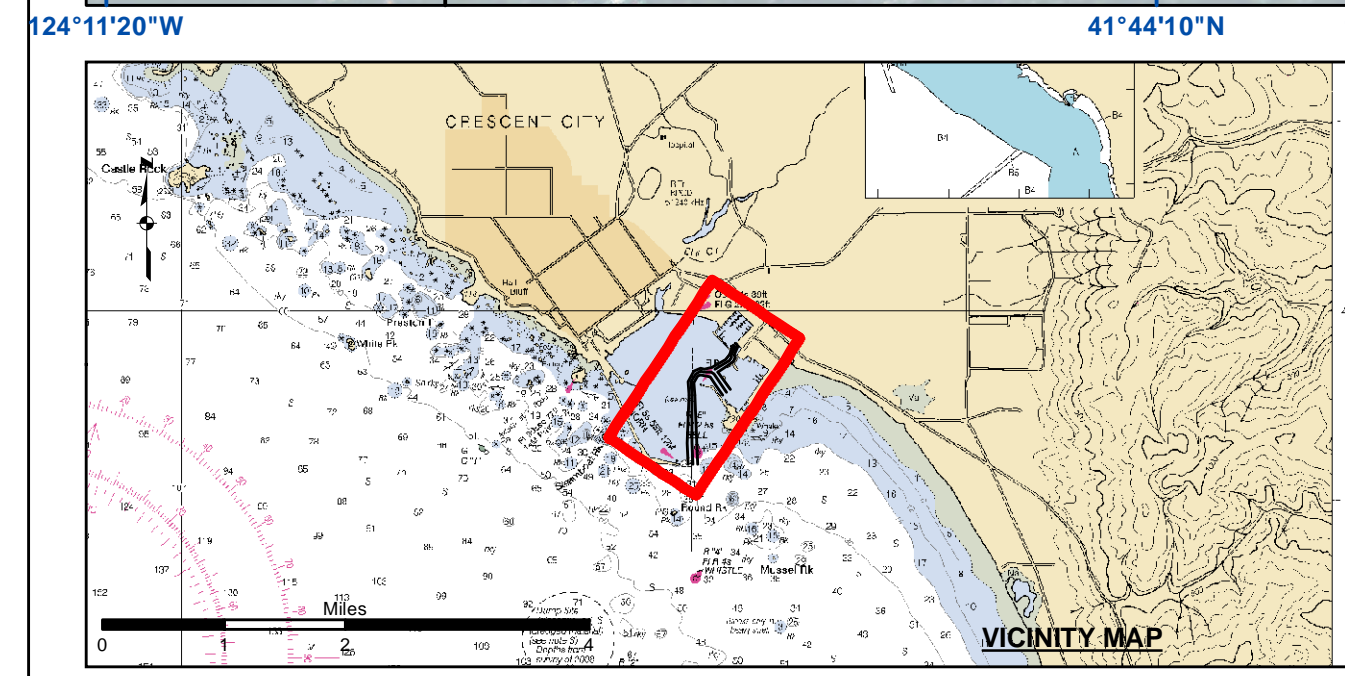
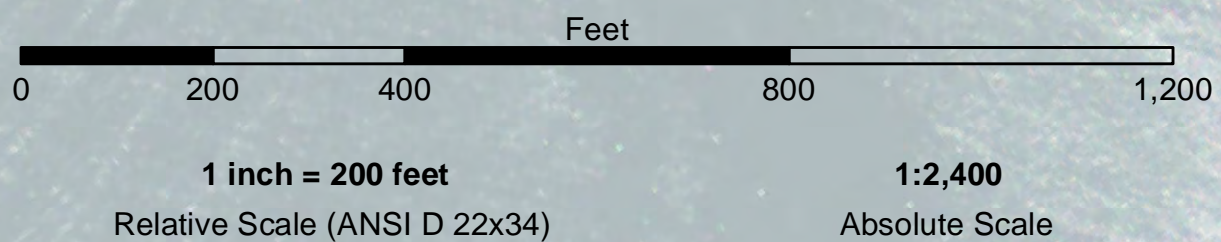


PRELIMINARY ISSUE
THIS PLAN ISSUED FOR
ADVANCE INFORMATION ONLY

| Angle Point | Easting | Northing |
|-------------|------------|------------|
| 01 | 5964034.06 | 2523317.15 |
| 02 | 5964016.64 | 2524016.94 |
| 03 | 5964112.28 | 2525555.38 |
| 04 | 5964100.94 | 2526002.91 |
| 05 | 5964291.44 | 2526320.06 |
| 06 | 5964510.66 | 2526417.87 |
| 07 | 5964640.82 | 2526387.82 |
| 08 | 5964896.75 | 2526428.90 |
| 09 | 5965340.91 | 2526683.00 |
| 10 | 5965486.85 | 2526813.90 |
| 11 | 5965566.98 | 2527049.75 |
| 12 | 5965533.54 | 2527090.90 |
| 13 | 5965656.54 | 2527207.90 |
| 14 | 5965741.54 | 2527102.90 |
| 15 | 5965817.15 | 2526809.28 |
| 16 | 5965858.54 | 2526720.90 |
| 17 | 5965599.54 | 2526594.90 |
| 18 | 5965354.54 | 2526471.90 |
| 19 | 5965075.79 | 2526287.40 |
| 20 | 5965454.87 | 2525702.48 |
| 21 | 5965208.23 | 2525530.41 |
| 22 | 5965004.97 | 2525845.23 |
| 23 | 5964811.88 | 2526142.53 |
| 24 | 5964530.87 | 2526207.96 |
| 25 | 5964430.39 | 2526163.01 |
| 26 | 5964302.32 | 2525949.44 |
| 27 | 5964312.18 | 2525550.74 |
| 28 | 5964336.54 | 2524024.90 |
| 29 | 5964353.96 | 2523325.11 |
| C01 | 5964194.01 | 2523321.13 |
| C02 | 5964176.59 | 2524020.92 |
| C03 | 5964212.14 | 2525553.06 |
| C04 | 5964201.63 | 2525976.17 |
| C05 | 5964360.92 | 2526241.54 |
| C06 | 5964520.76 | 2526312.91 |
| C07 | 5964818.13 | 2526290.37 |
| C08 | 5964854.32 | 2526285.71 |
| C09 | 5964948.91 | 2526207.67 |
| C10 | 5965351.62 | 2525630.45 |
| C11 | 5964981.66 | 2526361.78 |
| C12 | 5965473.68 | 2526652.44 |
| C13 | 5965525.97 | 2526721.89 |
| C14 | 5965541.25 | 2526811.61 |
| C15 | 5965655.12 | 2527079.88 |
| C16 | 5965590.20 | 2527144.80 |



| | | |
|----------------------------|--------------------|-----------------|
| Federal Navigation Channel | Beacon, General | Contours |
| Shoaling Area | Obstruction Point | |
| Placement Area | Navigation Buoy | -20, -15 |
| Anchorage Area | Navigation Buoy | -19, -14 |
| Wreck Area | Shoalest Sounding* | -18, -13 |
| Submerged Wreck | | -17, -12 |
| Angle Point | | -16, -11 |

NOTES:
HORIZONTAL COORDINATE SYSTEM: NORTH AMERICAN DATUM OF 1983 (NAD83), PROJECTED TO THE STATE PLANE COORDINATE SYSTEM (SPCS), CALIFORNIA ZONE II. DISTANCE UNITS IN U.S. SURVEY FEET.
VERTICAL DATUM: SOUNDINGS ARE SHOWN IN FEET AND INDICATE DEPTHS BELOW MEAN LOWER LOW WATER.
THE INFORMATION DEPICTED ON THIS MAP REPRESENTS THE RESULTS OF A SURVEY CONDUCTED ON THE DATE INDICATED AND CAN ONLY BE CONSIDERED TO REPRESENT THE GENERAL CONDITION EXISTING AT THAT TIME.
PLANE GRID, BEARING AND COORDINATES ARE BASED ON THE STATE OF CALIFORNIA COORDINATE SYSTEM, LAMBERT CONFORMAL PROJECTION, ZONE I NAD 83, CALIFORNIA, AS DESCRIBED IN SPECIAL PUBLICATION NO. 235, PUBLISHED BY NATIONAL OCEAN SURVEY, BASE MAPS ARE USDA NAIP 2010.
DRAWING NOT TO BE USED FOR NAVIGATION. ONLY CHANNEL CONDITION AT DATE OF SURVEY. INFORMATION PROVIDED BY THE U.S. COAST GUARD. BUOY LOCATIONS REPRESENT THE POSITION OF THE SINKER ONLY.
SURVEYED BY GAHAGAN & BRYANT ASSOCIATES, INC.

SOUNDINGS ARE ACQUIRED BY FATHOMETER AND ARE SHOWN TO THE NEAREST TENTH OF A FOOT. VERTICAL AND HORIZONTAL CONTROL: USC&GS DISK 'BM TIDAL 20 1959 RESET 1060', LOCATED NEAR THE NORTH EAST CORNER OF CITIZEN DOCK. ELEV. 13.46' MLLW. (1983-2001 EPOCH); N 2526793.45, E 5965753.79.
HORIZONTAL POSITIONING OBTAINED USING LEICA 120 RTK SYSTEM.
SOUNDINGS ARE BASED ON THE DATUM OF MEAN LOWER LOW WATER AT THE LOCALITY, NAVD 88.
THE PROJECT DEPTH IS -20 FEET (STA 0+00 TO 22+00) AND -15 FEET (STA. 23+00 TO END AND MARINA).
Survey Control:
941 9750, CRESCENT CITY
Published 4/21/2003 | Epoch 1983-2001
941 9750 TIDAL 20 RESET
PID: LV0110
OPUS November 2018
PPCP
941 9750 V TIDAL
PID: LV0563
OPUS October 2015

US Army Corps of Engineers
San Francisco District
1455 Market Street
San Francisco, CA 94103

DISCLAIMER: The United States Government furnishes this information as a service to the public and does not warrant, express or implied, the accuracy, completeness, or reliability of the information. The user assumes all liability for any use of the information. The United States Government is not responsible for the results of any application of the data for other than the intended purpose. These data belong to the Government. Therefore the recipient may not transfer these data to others without also transferring this disclaimer.

| | |
|---|--------------------------|
| Prepared Under the Direction of JOHN D. CUNNINGHAM LT COLONEL, C.E., DISTRICT ENGINEER | Chart Date: Jun 10, 2020 |
| Submitted: Hydro Survey Team Leader | Designed by: PDT |
| Recommended: Chief, Hydro Survey Section | Plotted by: PDT |
| Approved: Chief, Construction Branch | Checked by: PDT |
| | Drawn by: PDT |

CALIFORNIA
CRESCENT CITY
CONDITION SURVEY
10 JUNE 2020

Sheet Reference Number
1 of 1